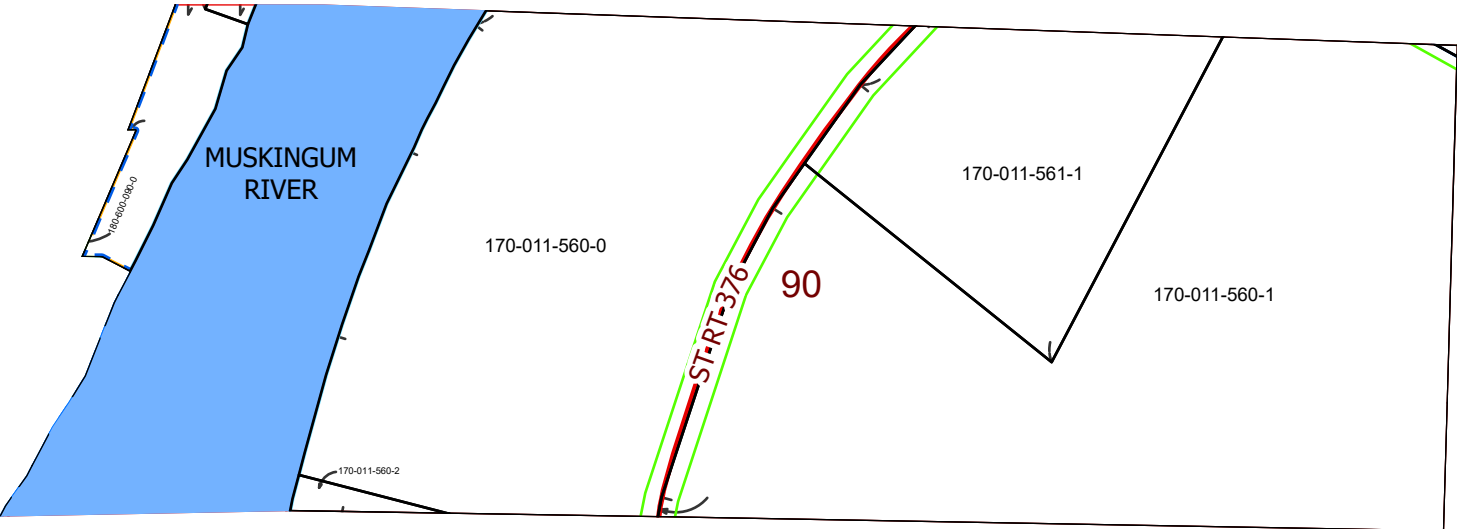
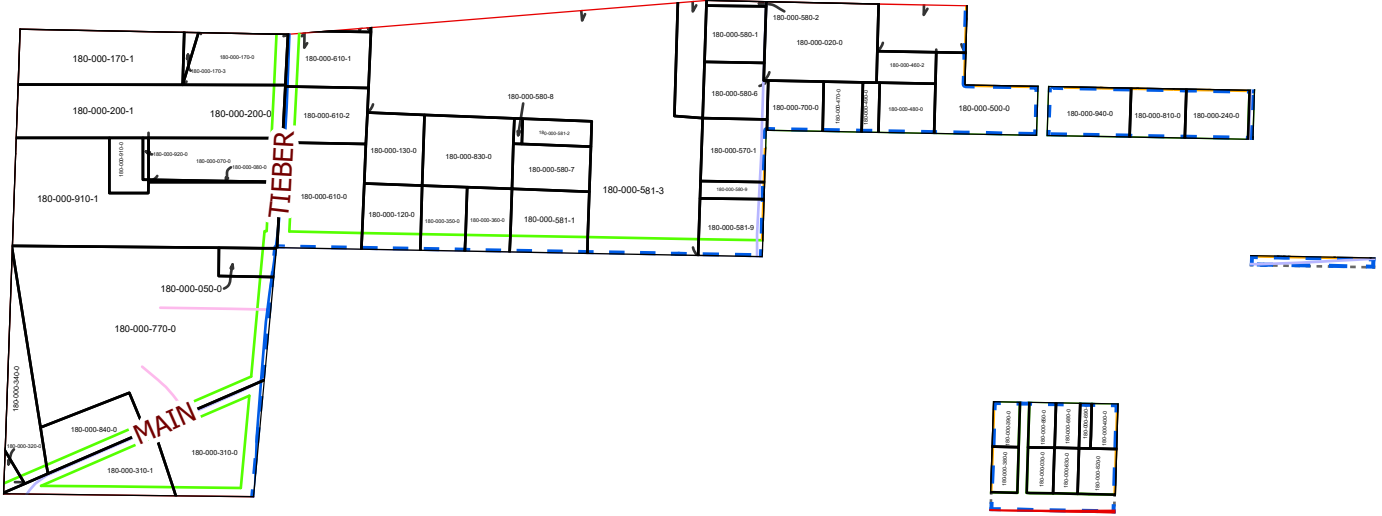


MORGAN COUNTY, OHIO



WINDSOR TWP. FRAC. 90, T-9, R-11, OHIO CO. PURCHASE

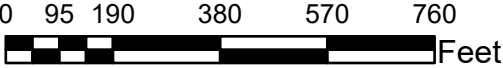
PIN	Owner	LegalDescr	VOL	PAGE
180-000-020-0	ADAMS JOHN D & JEAN	R11 T09 S00 FR 90	D.V 174	598
180-000-580-9	BURT DWIGHT LELAND LIVING TRUST	R11 T09 S00 SD 43	OR235	1292
180-000-570-1	BURT DWIGHT LELAND LIVING TRUST	R11 T09 S00 SD 44	OR235	1292
180-000-690-0	CLARK REBECCA J	R11 T09 S00 FR 90	OR215	2929
180-000-680-0	CLARK REBECCA J	R11 T09 S00 FR 90	OR215	2929
180-000-080-0	CUNNINGHAM CHESTER N & BARBARA L TRUSTEE	R11 T09 S00 FR 90	OR224	278
180-000-070-0	CUNNINGHAM CHESTER N & BARBARA L TRUSTEE	R11 T09 S00 FR 90	OR224	278
180-000-830-0	DENTON DYLAN K	R11 T09 S00 FR	OR235	3430
180-000-580-8	DENTON DYLAN K	R11 T09 S00 FR	OR235	3430
180-000-460-0	DULANEY AARON & LISA	R11 T09 S00 FR	OR228	2810
180-000-310-1	DWIGHT LELAND BURT LIVING TRUST	R11 T09 S00 SD 49	OR233	1300
180-000-310-0	DWIGHT LELAND BURT LIVING TRUST	R11 T09 S00 FR 90	OR233	1300
180-000-200-0	DWIGHT LELAND BURT LIVING TRUST	R11 T09 S00 FR 90	OR233	1300
180-000-170-3	DWIGHT LELAND BURT LIVING TRUST	R11 T09 S00 SD 53	OR233	1300
180-000-170-1	DWIGHT LELAND BURT LIVING TRUST	R11 T09 S00 SD 51	OR233	1300
180-000-170-0	DWIGHT LELAND BURT LIVING TRUST	R11 T09 S00 SD 24	OR233	1300
180-000-130-0	ECKERT HELEN I	R11 T09 FR 89-90 SD	OR235	5632
180-000-120-0	ECKERT HELEN I	R11 T09 FR 89-90 SD	OR235	5632
180-000-700-0	EDDLERLUTE DAVID E & TABITHA R	R11 T09 S00 FR 90	OR227	3069
180-000-840-0	EDDLERLUTE SCOTT D	R11 T09 S00 FR 90	OR233	2498
180-000-340-0	EDDLERLUTE SCOTT D TOD-GEORGIA LEE	R11 T09 S00 FR 90	OR152	694
180-000-320-0	EDDLERLUTE SCOTT D TOD-GEORGIA LEE	R11 T09 S00 FR 90	OR152	694
180-000-580-7	EWART BONDA JO	R11 T09 S00 SD 58	OR53	164
180-000-610-0	FARNSWORTH RAMONA G	R11 T09 S00 SD 30	OR225	332
180-000-820-0	FIRST NATIONAL BANK	R11 T09 S00 FR 90	D.V 146	353
180-000-940-0	GEORGE DUANE A	R11 T09 S00 FR 90	OR222	699
180-000-810-0	GEORGE DUANE ALFRED	R11 T09 S00 FR 90	OR222	702
180-000-240-0	GEORGE DUANE ALFRED	R11 T09 S00 FR 90	OR44	708
180-000-850-0	GIFFORD RICKY E II & ALISHA R	R11 T09 S00 FR 90	OR226	1323

Boundaries
Type

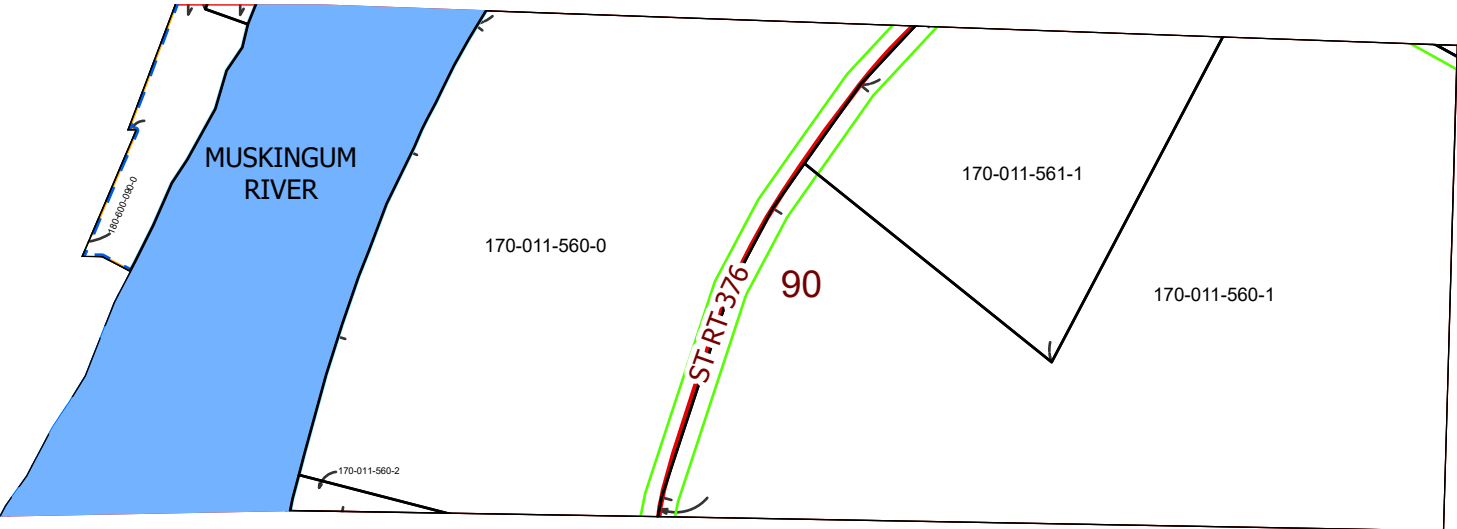
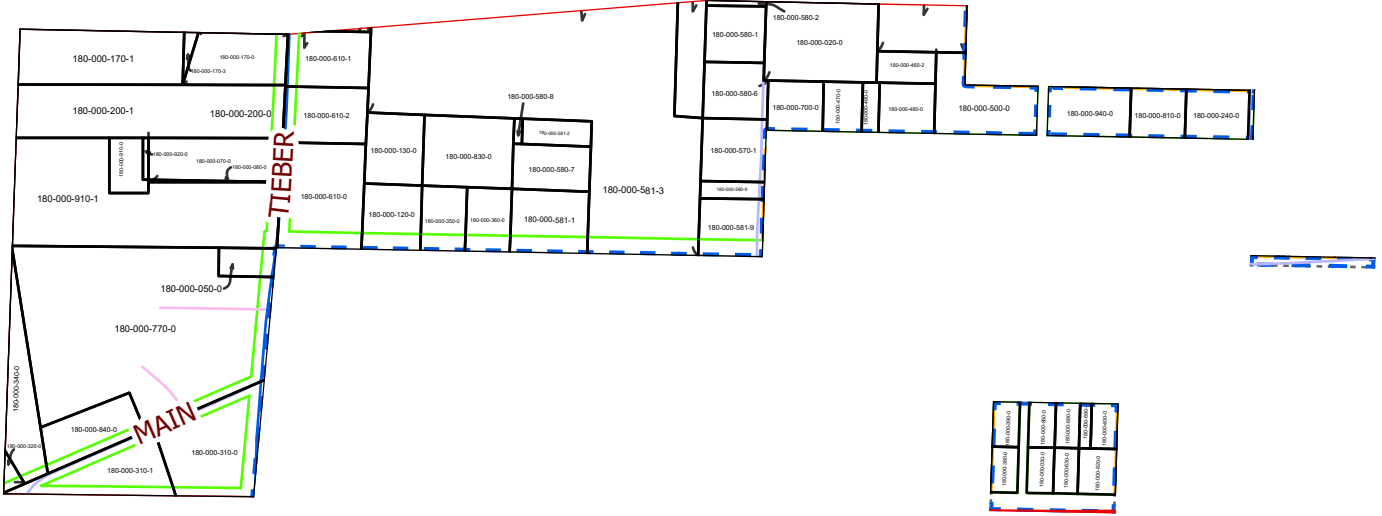
- County
- Hidden
- Hydro
- Parcel
- ROW
- Section
- Lot
- <all other values>



08/10/2020



MORGAN COUNTY, OHIO



WINDSOR TWP. FRAC. 90, T-9, R-11, OHIO CO. PURCHASE

PIN	Owner	LegalDescr	VOL	PAGE
180-000-360-0	HARLOW BENTLEY L & BRIAN T & BRIDGET L	R11 T09 S00 FR	OR235	2363
180-000-350-0	HARLOW BENTLEY L & BRIAN T & BRIDGET L	R11 T09 S00 FR	OR235	2363
180-000-370-0	HOOK STEVAN	R11 T09 S00 FR 89	OR203	676
180-000-260-0	HOOK STEVAN & MICHELLE R	R11 T09 S00 FR 89	OR212	319
180-000-380-0	HUFFMAN TRACIE L	R11 T09 S00 FR 90	OR232	930
180-000-490-0	MCBRIDE ROGER DANIEL & JOY LEE	R11 T09 S00 FR 90	OR223	2828
180-000-480-0	MCBRIDE ROGER DANIEL & JOY LEE TOD-ALICIA	R11 T09 S00 FR 90	OR223	2828
180-000-460-2	MCBRIDE ROGER DANIEL & JOY LEE TOD-ALICIA	R11 T09 S00 SD 57	OR223	2828
180-000-470-0	MCCOURT WESLEY	R11 T09 S00 FR 90	OR210	153
170-011-560-1	MCCOY TIMOTHY M JR	R11 T09 S00 FR 90	OR168	149
180-000-610-1	MURPHY ROBERT R II & LORETTA M	R11 T09 S00 FR 90	D.V 194	430
180-000-581-0	MYERS ROBERT & LYNNE	R11 T09 S00 SD 62	OR218	2360
180-000-580-2	MYERS ROBERT & LYNNE	R11 T09 S00 SD 46	D.V 190	399
180-000-580-1	MYERS ROBERT & LYNNE	R11 T09 S00 SD 45	D.V 190	399
180-000-580-6	MYERS ROBERT W & LYNNE E	R11 T09 S00 SD 50	OR184	715
180-000-400-0	NORMAN PAUL T	R11 T09 S00 FR 90	OR224	76
180-000-581-2	SANDERS BONDA J	R11 T9 S0 FR 89-90	OR230	542
180-000-581-1	SANDERS BONDA J	R11 T9 S0 FR 89-90	OR230	542
180-000-610-2	SCHRAMM MARK E & JILL R	R11 T09 S00 FR 90	OR90	516
180-000-581-9	SCOTT BRADLEY & BRITTNEY	R11 T9 FR90 SD65	OR233	779
180-000-580-0	SEALOCK DORIAN	R11 T09 S00 FR	OR236	670
180-000-920-0	SHUSTER SALLY JO	R11 T09 S00 FR 90	OR226	2969
180-000-910-1	SHUSTER SALLY JO	R11 T09 S00 SD 47	OR227	2341
180-000-910-0	SHUSTER SALLY JO	R11 T09 S00 FR 90	OR226	2969
180-000-630-0	SHUSTER SALLY JO	R11 T09 S00 FR 90	OR226	2963
180-000-050-0	SHUSTER SALLY JO	R11 T09 S00 FR 90	OR226	2960
170-011-560-2	SM	R11 T09 S00 SD 62	OR229	2045
180-000-770-0	STOCKPORT RRH LTD AN OHIO LIMITED	R11 T09 S00 FR 90	D.V 177	509
180-000-390-0	THE COMMUNITY ACTION PROGRAM	R11 T09 S00 FR 90	OR104	261
170-011-560-0	WHITE CONNIE L & DIANA	R11 T09 S00 FR 90	OR134	220
170-011-561-1	WYMER GRANT E & MISTI L	R11 T09 S00 FR 90	OR100	51
180-000-500-0	ZUMBRO MATTHEW E & SHANNON P	R11 T09 S00 FR 90	OR233	2924

Boundaries
Type

- County
- Hidden
- Hydro
- Parcel
- ROW
- Section
- Lot
- <all other values>



08/10/2020

